

Jalal Ahmed: Scholastica School

, Thursday 21 June 2007 - 18:00:00

SCHOLASTICA SCHOOL, Dhaka (1997-2000)

Designed by: JAA (Architect Jalal Ahmed)



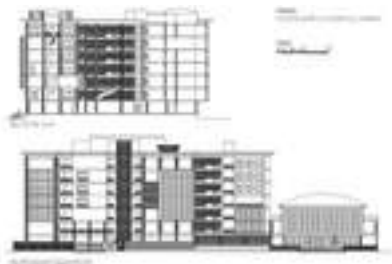
The project was for one of the leading English medium school at Dhaka. The school was functioning in several scattered residential houses until last year. The newly constructed building complex at Uttara houses class five to A level classes. Due to limited size (1 acre approximately) of the site and large building requirements the architect had to design a multi storied building with ample open space for the student to interact and circulate outside the class rooms

Double height main entrance with elevated ground level, stair cases and corridors of different size and shapes, interconnecting different levels around the central court with changing panoramic views. A combination of green plants and bare brick at different floor levels softens the solidity of the courtyard side corridors. Play of ever changing sunrays through wide and perforated over hanging parasols. The front facade treated with reflective glass, bare bricks and plastered

surfaces which creates a varied but coherent visual impression.









Download Drawings in AutoCAD Format



Download Drawings in PDF Format



Download Google Earth KMZ Location

